

November 1946

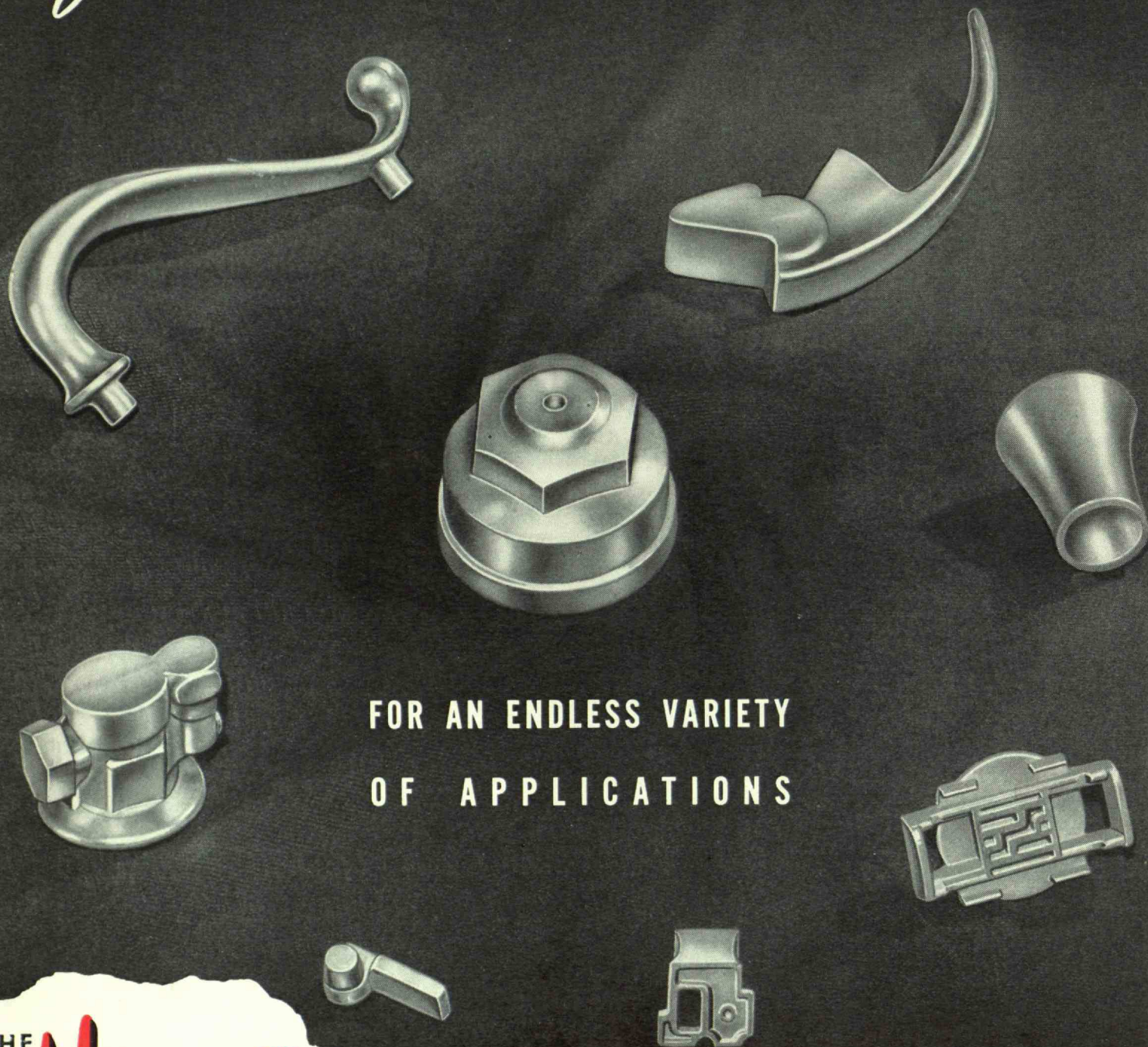
TECHNOLOGY REVIEW

Title Reg. in U. S. Pat. Office



NON-FERROUS FORGINGS

for STRENGTH • LESS MACHINING • FEWER REJECTS



FOR AN ENDLESS VARIETY
OF APPLICATIONS

THE

HARVEY

METAL CORPORATION

HAROLD B. HARVEY '05 • *Engineers & Manufacturers* • SHERRY O'BRIEN '17

74th STREET and ASHLAND AVENUE • CHICAGO 36, ILLINOIS

FORGINGS IN ALUMINUM • BRASS • BRONZE • COPPER • MAGNESIUM • MONEL • ALLOYS

MACHINING FACILITIES



Bookkeeping records seldom show the *true costs* of eye accidents—merely compensation and medical expense. However, the “hidden” costs* (machinery and work damage, idle time and lowered worker morale, to name but a few) are estimated—by a recognized authority—to be *four times* the amount of the direct cost of eye accidents.

Why not let your nearest A-O Safety Representative show you how much an adequate eye-protection program can save for you.

*Not Insurable



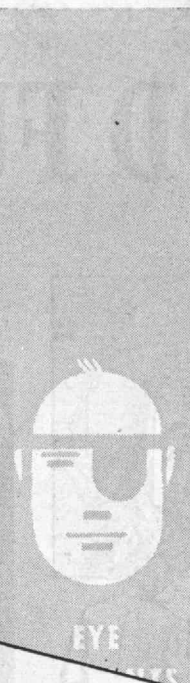
American Optical



COMPANY
Safety Division

SOUTHBRIDGE, MASSACHUSETTS
BRANCHES IN PRINCIPAL INDUSTRIAL CITIES

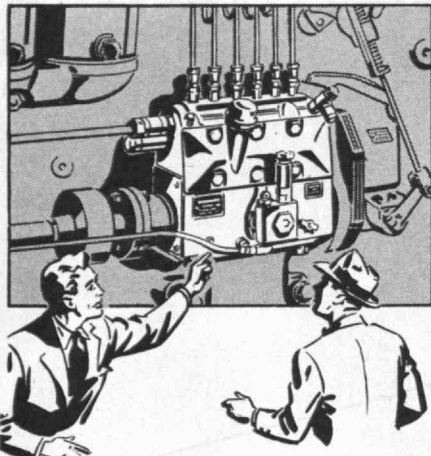
Send for a copy of the latest
study of Eye Accident Costs.




EYE
ACCIDENTS
\$500
PER
SHOPWORKER
PER YEAR

GOOD FUEL INJECTION

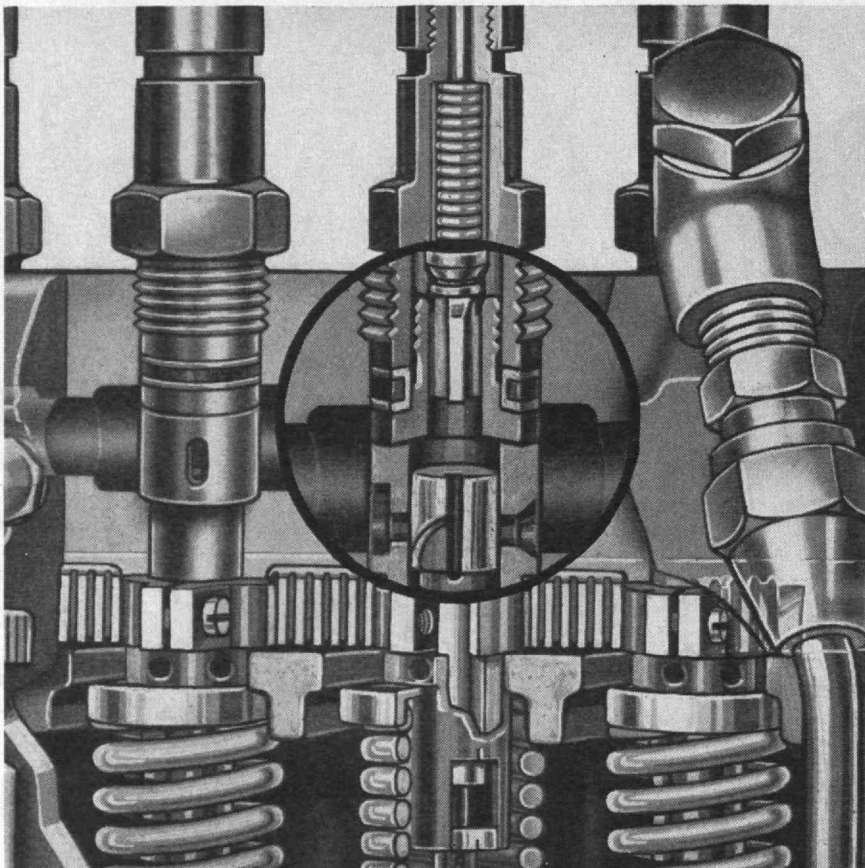
Pays Dividends



"DIVIDENDS?"

"Yes — from better engine performance and lower operation and maintenance costs over long service cycles. That explains why American Bosch Fuel Injection is known the world over as 'good fuel injection'."

"WHAT MAKES the system good? Accumulated 'know-how' and leadership throughout the years — 'know-how' that follows through even in the smallest part. Here, for example is just one tiny but vital part — the delivery valve. It must be designed and held to exacting tolerances to perform the dual key functions of preventing excessive draining of fuel oil from the line system and controlling the pressure remaining in the system, from pump to nozzle valve, between injection strokes."



"YOU'LL FIND the same values in all other parts of American Bosch Fuel Injection Systems. Yes, good fuel injection pays dividends and goes right on paying them."



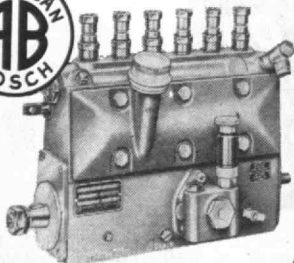
WRITE FOR A COMPLETE DIRECTORY OF AMERICAN BOSCH AUTHORIZED SERVICE STATIONS

AMERICAN BOSCH CORPORATION, SPRINGFIELD 7, MASS.

AMERICAN BOSCH

Diesel Fuel Injection

AVIATION AND AUTOMOTIVE ELECTRICAL PRODUCTS • FUEL INJECTION EQUIPMENT



Already a Sensation — **32 Alundum Grinding Wheels**

INTRODUCED only a month ago, the new 32 ALUNDUM Grinding Wheels are already making truly sensational records. And there are definite reasons.

32 ALUNDUM Wheels are Sharper

By a patented Norton electric furnace process the grains of "32" form as single crystals of correct size — each one with a nubby surface and many sharp points. And there's no crushing operation to produce flat surfaces. When the grains of 32 ALUNDUM abrasive are bonded into a wheel there are always many sharp points exposed.

There's More Usable Abrasive in 32 ALUNDUM Wheels

32 ALUNDUM abrasive is over 99% pure fused alumina—no slag—no pores. You not only get more sharp cutting points in a 32 ALUNDUM wheel but points that don't dull easily because they're all usable abrasive.

Ask your Norton abrasive engineer to give you a Vectograph demonstration of the new 32 ALUNDUM abrasive.

NORTON COMPANY, WORCESTER 6, MASS.

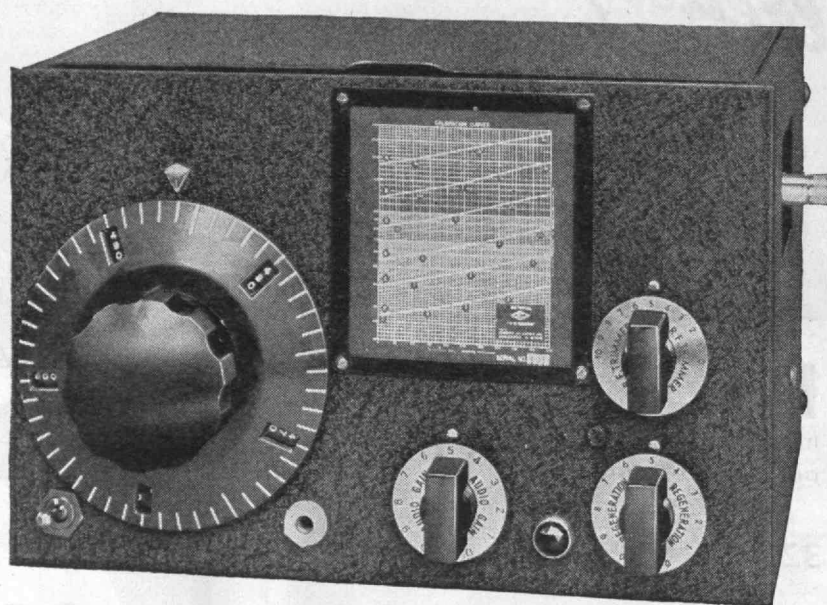
Distributors in All Principal Cities

W-1078



NORTON ABRASIVES

TRADE MARK REG. U.S. PAT. OFF.



THE 1-10A

The ONE-TEN-A is a complete redesign of the ONE-TEN, retaining all the proven design features of the older model but with improved performance and smoothness of control. For many years the ONE-TEN has been the "standard" receiver for work in the range from one to ten meters. Although many advances in high frequency technique have been made since this little receiver was first introduced, it has easily held its place in the affections of experienced amateurs by its consistent dependability under actual operating conditions and its high usable sensitivity.

The new ONE-TEN-A inherits the fine qualities of its predecessor brought up to date by a complete restudy of circuit, mechanical arrangement and constructional details.

The ONE-TEN-A is a fine receiver.



NATIONAL COMPANY, INC., MALDEN, MASS.



These furnaces are a long way from a tire maker's plant, yet they are an important part of the rubber industry. They're at Ville Platte, Louisiana, and they are making carbon black to add toughness and mileage to the nation's truck and automobile tires.

But Ville Platte's carbon black represents only a part of Cabot production. From the pine timber country of Florida, to the alfalfa fields of the Rio Grande valley and the natural gas fields of Texas, Oklahoma and West Virginia, Cabot Companies are at work providing essential raw materials for American industry.

Carbon Black
Natural Gas
Natural Gasoline
Pumping Equipment
Pine Tar
Charcoal
Carotene
Chlorophyll

CABOT CARBON CO.
TEXAS ELF CARBON CO.
GENERAL ATLAS CARBON CO.
CABOT SHOPS, INC.
VALLEY VITAMINS, INC.

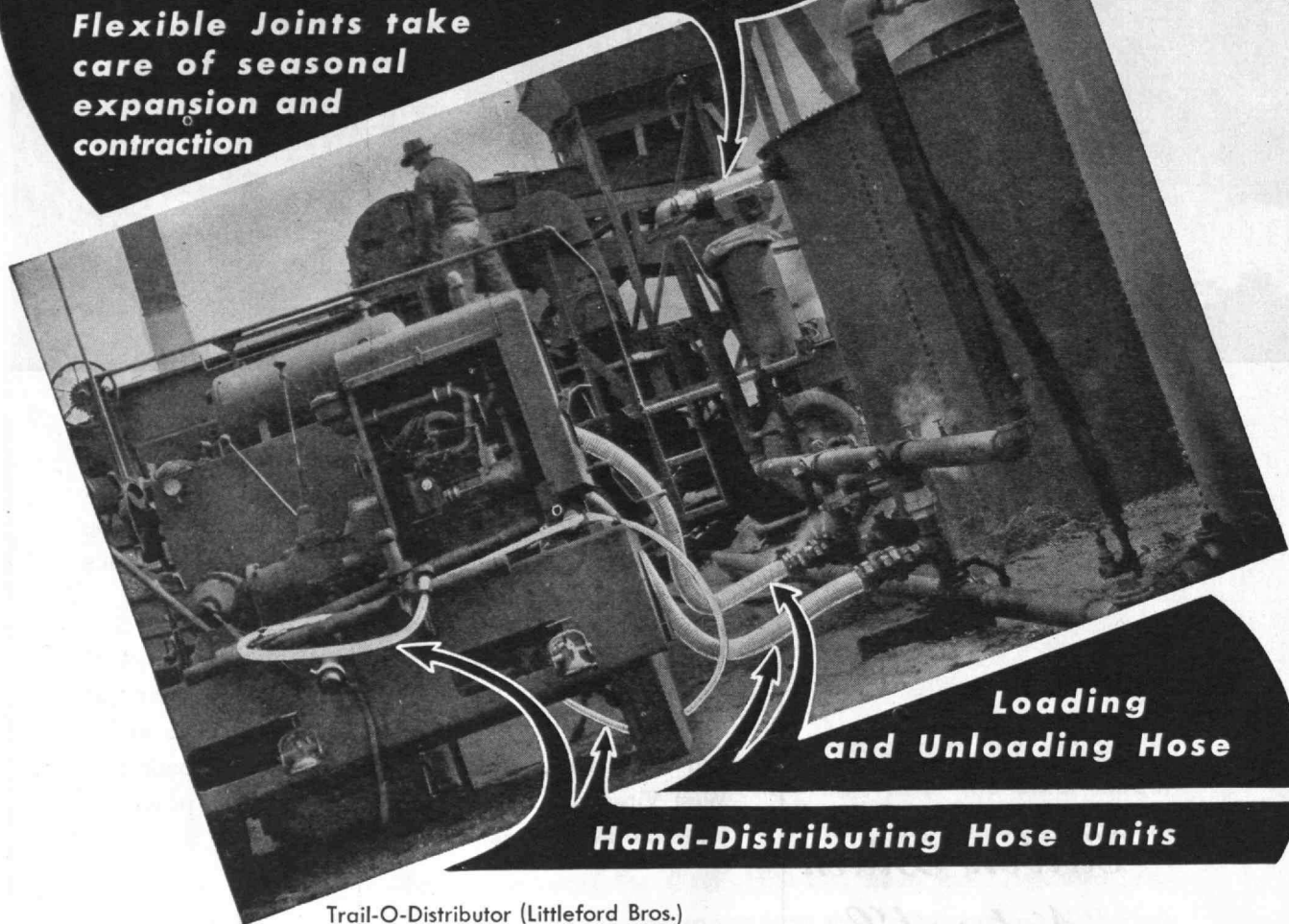


GODFREY L. CABOT, INC.

77 FRANKLIN STREET • BOSTON 10, MASS.

Transfer Pump Unit equipped with **PENFLEX** Galvanized Steel Metal Hose and Heatproof Couplings

Flexible Joints take care of seasonal expansion and contraction



Loading and Unloading Hose

Hand-Distributing Hose Units

Trail-O-Distributor (Littleford Bros.)

This mobile transfer pump unit for use with storage tanks is equipped with two lengths of PENFLEX Unloading Hose which give large capacity and PENFLEX Hand-Distributing Lines which, if needed, have added value for redistribution.

A unit of this type equipped with the PENFLEX Expansion Joints and Heatproof Couplings, on the storage tanks, suggests the wide variety of industrial uses to which PENFLEX Products can be put.

The four-wall interlocked PENFLEX construction is extremely flexible, reduces parts breakage, resists thermal and mechanical strains and absorbs vibration. Heatproof Couplings are furnished.

Our engineers have had a vast amount of experience in almost every conceivable application of flexible tubing and hose. They will be glad to discuss your problems with you. PENFLEX Products are listed in trade catalogs and directories for your convenience—for detailed information, write our Engineering Department.

PENFLEX SALES COMPANY

DIVISION OF

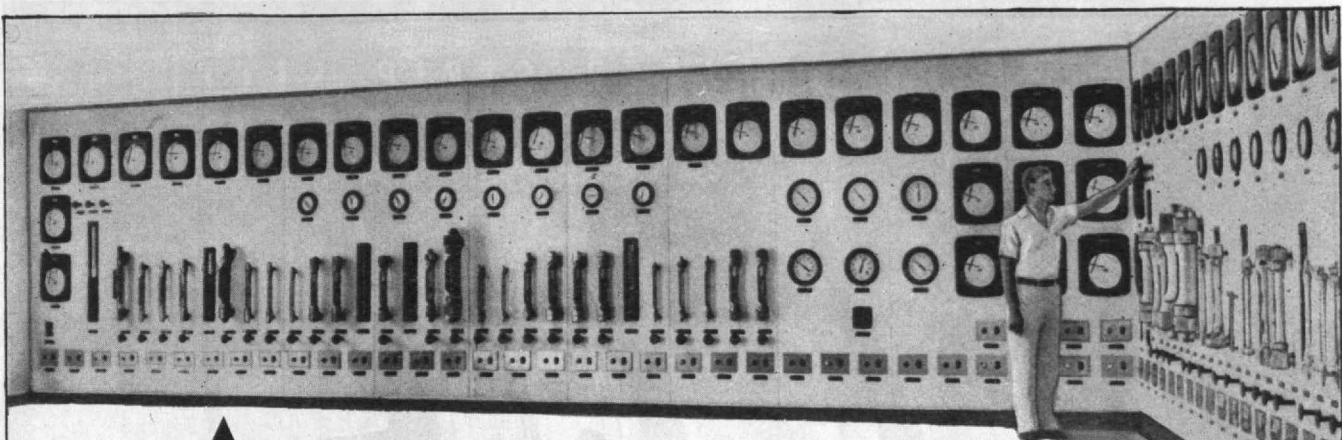
PENNSYLVANIA FLEXIBLE METALLIC TUBING CO.

Established 1902

7211 POWERS LANE

PHILADELPHIA 42, PA.

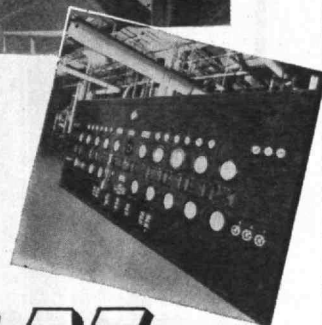
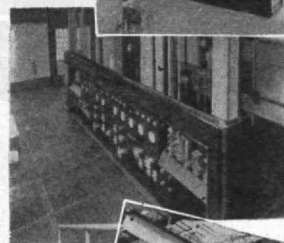
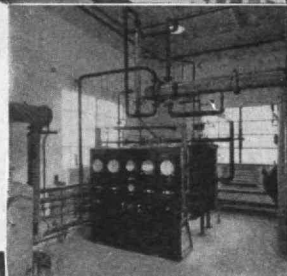




AUTOMATIC and CENTRALIZED CONTROL

Vulcan-designed distillation units and plants incorporate the latest developments in instrumentation. Through such automatic and centralized control, operating costs are kept at a minimum, uniformity of product quality is insured and overall high yields are guaranteed. Entire plant operations are controlled from a centralized control station, thereby eliminating costly variables which are bound to arise from obsolete manual operations.

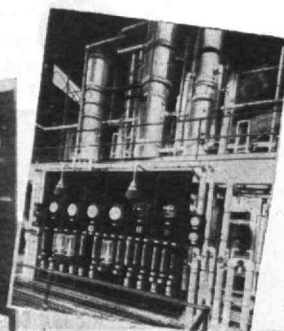
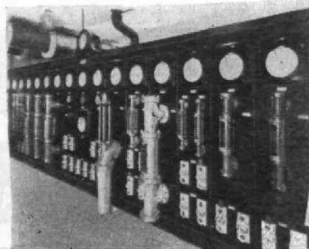
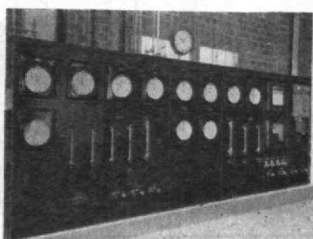
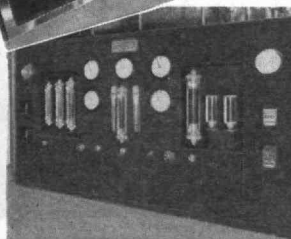
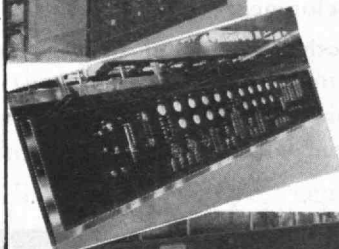
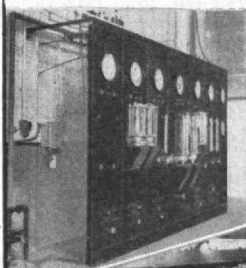
The Vulcan engineering staff, through long experience in the development and application of the best types of automatic control, is available to furnish this valuable experience to the chemical process industries for plant modernization and improved operational methods.



VULCAN

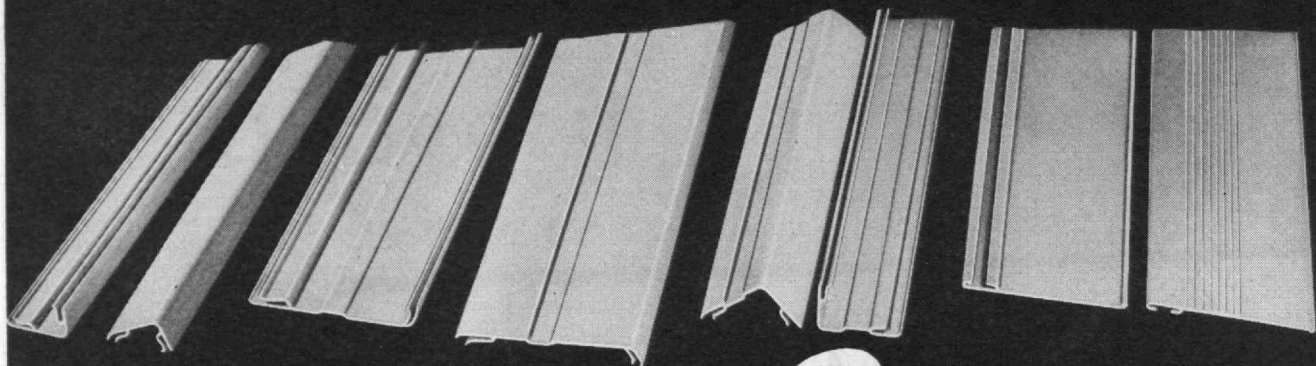
DISTILLATION EVAPORATION EXTRACTION

PROCESSES and EQUIPMENT



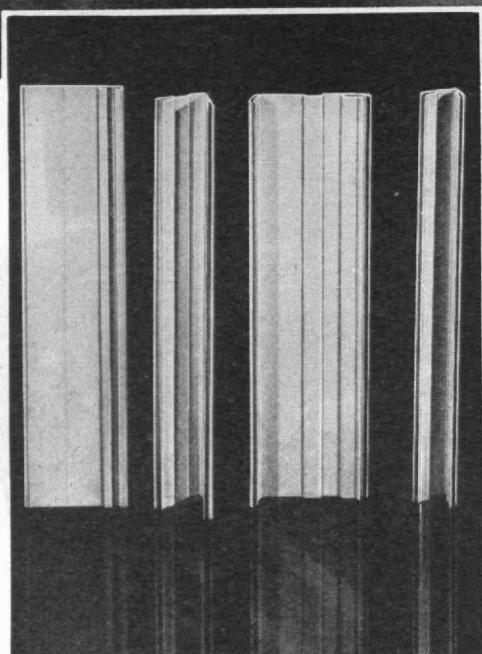
THE VULCAN COPPER & SUPPLY CO., CINCINNATI, OHIO

REFRIGERATOR BREAKER STRIP SECTIONS



EXTRUDED BY...

Sandee



THE ACCEPTED MATERIAL FOR BREAKER STRIPS

Plastics have long been the accepted material for breaker strips. Modern trends, however, demand better functioning and better looking sections.

The refrigerator breaker strip sections shown above illustrate another milestone in Sandee's development of sound industrial applications for plastics.

Sandee, in close cooperation with several leading refrigerator manufacturers, has developed a number of better custom extruded snap-on breaker strips. Among other superior advantages they 1. greatly decrease assembly time, 2. eliminate unsightly screws, and 3. provide a pleasing contour to blend into general cabinet design. Available in white or appealing, contrasting, pastel tones.

Again, our technical personnel can offer you the benefits of successful experience in the development of individual refrigerator parts as well as for other sound industrial applications.

SALES REPRESENTATIVES IN 19 PRINCIPAL CITIES

Sandee Manufacturing Company

3945 NORTH WESTERN AVENUE • CHICAGO 18, ILLINOIS

EXTRUDED PLASTICS AND SPECIAL TOOLS